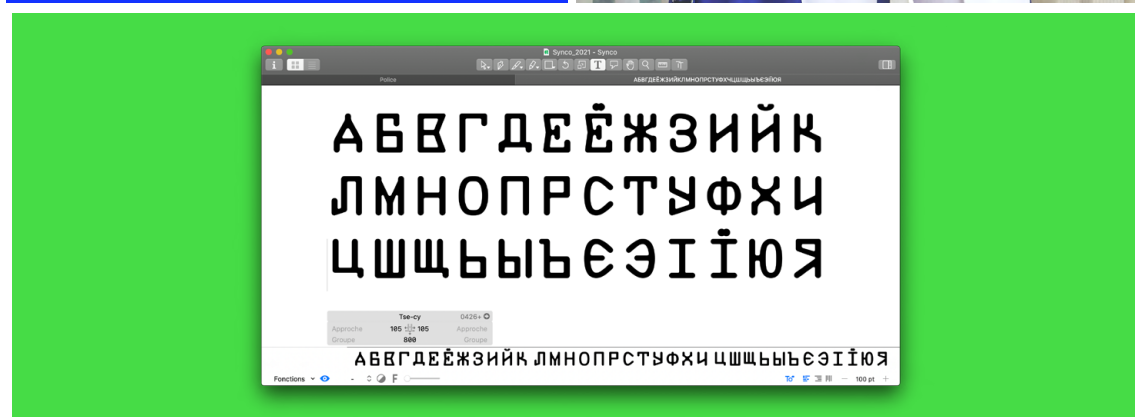


SYNCO: A PARTICIPATIVE AND OPEN SOURCE TYPEFACE PROJECT INITIATED BY ALTIPLANO



SYNCO lettershape, based on OCR, pays homage to VIAFONT, 1969, by Harry L. Preble for VIATRON, a producer of OCR machines. It was initially designed for a London based sportswear brand in 2015.



SYNCO IS AVAILABLE UNDER THE SIL OPEN FONT LICENSE